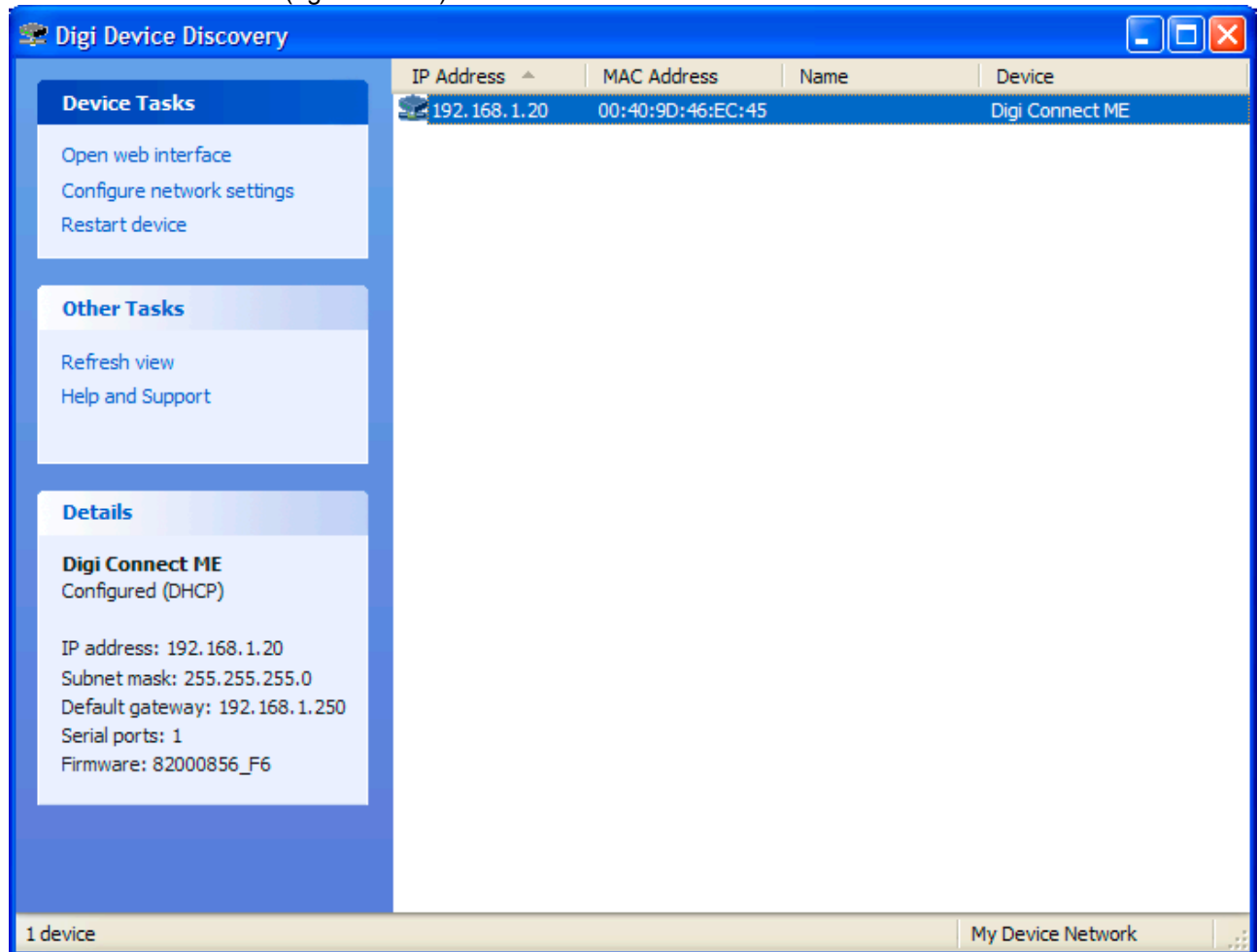


Config. and reset procedure for ETHERNET optional module of 80.087.7000 (EL7) electronic board – Italora code PBG739204202000

- Connect to network
- Run DIGI DISCOVERY (dgdiscvr.exe) to locate ETH module and its address

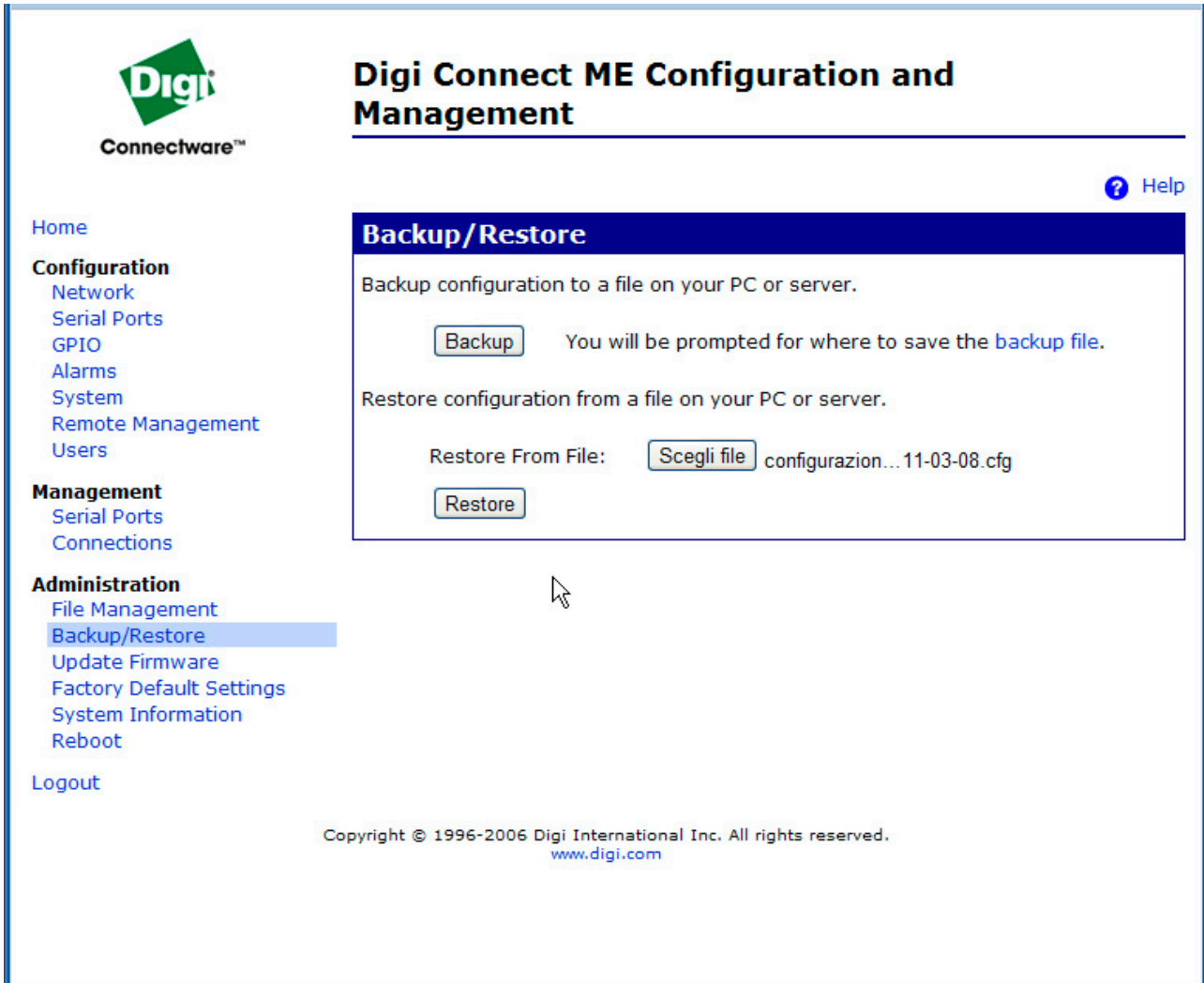


- double-click listed device to enter web setup panel
- login parameters:
USERNAME = root
PASSWORD = dbps

CONFIGURATION LOADING

Click BACKUP/RESTORE and select configuration file by BROWSE

Click RESTORE to enable selected configuration



Digi Connect ME Configuration and Management

Connectware™

[Home](#)

Configuration

- [Network](#)
- [Serial Ports](#)
- [GPIO](#)
- [Alarms](#)
- [System](#)
- [Remote Management](#)
- [Users](#)

Management

- [Serial Ports](#)
- [Connections](#)

Administration

- [File Management](#)
- [Backup/Restore](#)
- [Update Firmware](#)
- [Factory Default Settings](#)
- [System Information](#)
- [Reboot](#)

[Logout](#)

Backup/Restore

Backup configuration to a file on your PC or server.

You will be prompted for where to save the [backup file](#).

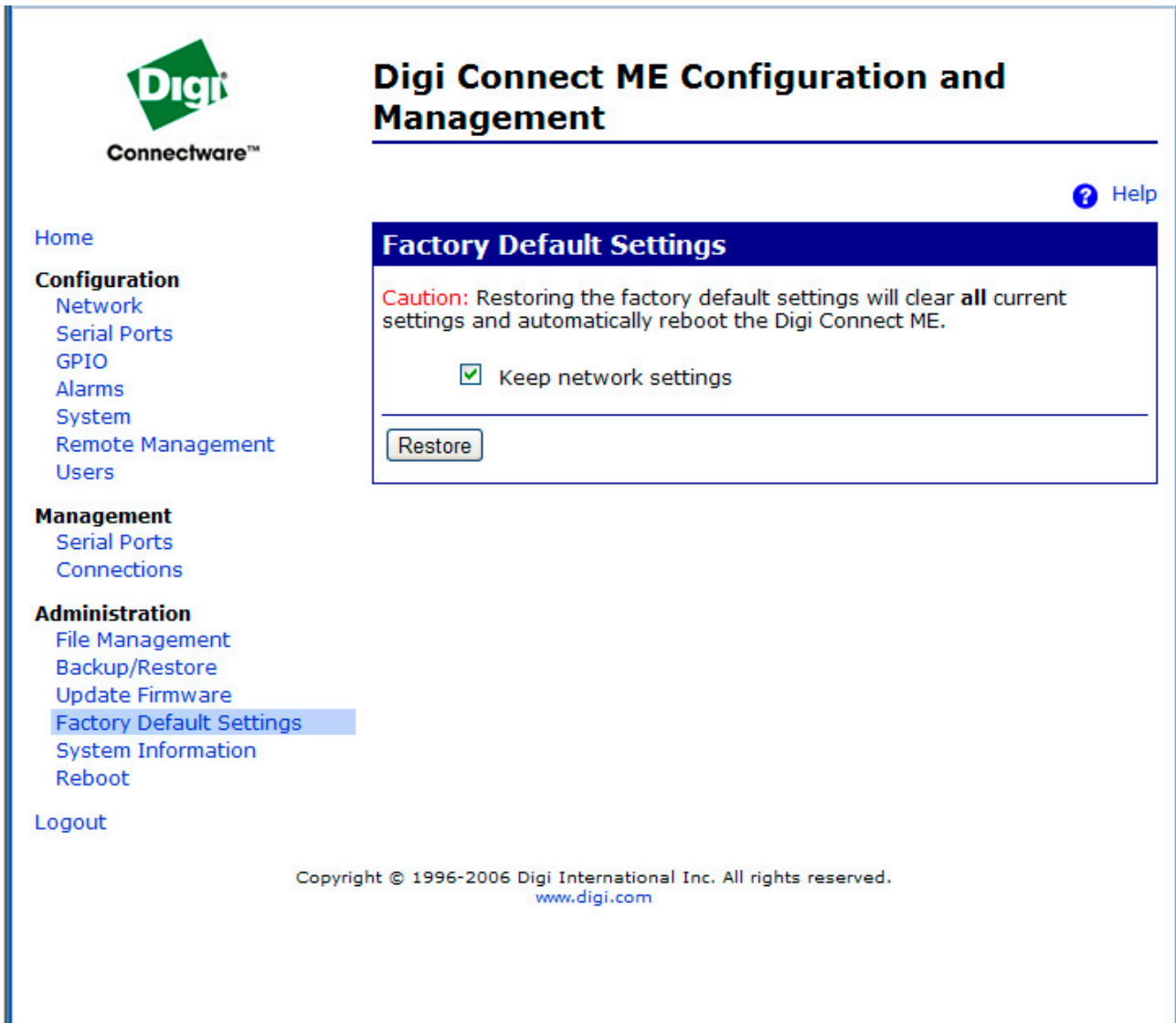
Restore configuration from a file on your PC or server.

Restore From File: configurazion... 11-03-08.cfg

Copyright © 1996-2006 Digi International Inc. All rights reserved.
www.digi.com

FACTORY DEFAULT SETTING - RESET

Click Factory Default Settings, then click RESTORE



The screenshot displays the 'Digi Connect ME Configuration and Management' web interface. The top left features the 'Digi Connectware™' logo. The main title 'Digi Connect ME Configuration and Management' is prominently displayed. A 'Help' link is visible in the top right corner. The left sidebar contains a navigation menu with categories: 'Home', 'Configuration' (with sub-items: Network, Serial Ports, GPIO, Alarms, System, Remote Management, Users), 'Management' (with sub-items: Serial Ports, Connections), 'Administration' (with sub-items: File Management, Backup/Restore, Update Firmware, Factory Default Settings, System Information, Reboot), and 'Logout'. The 'Factory Default Settings' option under 'Administration' is highlighted. The main content area is titled 'Factory Default Settings' and includes a 'Caution' message: 'Restoring the factory default settings will clear all current settings and automatically reboot the Digi Connect ME.' Below this, there is a checkbox labeled 'Keep network settings' which is checked. At the bottom of this section is a 'Restore' button. The footer contains the copyright notice: 'Copyright © 1996-2006 Digi International Inc. All rights reserved. www.digi.com'.

Italora default configuration is summarized by following screenshots

The screenshot displays the 'Digi Connect ME Configuration and Management' web interface. The left sidebar contains a navigation menu with sections: 'Configuration' (Network, Serial Ports, GPIO, Alarms, System, Remote Management, Users), 'Management' (Serial Ports, Connections), and 'Administration' (File Management, Backup/Restore, Update Firmware, Factory Default Settings, System Information, Reboot). The 'Home' link is at the top of the sidebar, and 'Logout' is at the bottom. The main content area is titled 'Network Configuration' and features a '▼ IP Settings' section. It offers two options: 'Obtain an IP address automatically using DHCP *' (selected) and 'Use the following IP address:'. The latter option includes input fields for '* IP Address' (192.168.1.21), '* Subnet Mask' (255.255.255.0), and 'Default Gateway' (192.168.1.240). A note states: '* Changes to DHCP, IP address and Subnet Mask require a reboot to take effect.' Below this is an 'Apply' button. At the bottom of the main area are links for '▶ Network Services Settings' and '▶ Advanced Network Settings'. The footer contains the copyright notice: 'Copyright © 1996-2006 Digi International Inc. All rights reserved. www.digi.com'.

Digi Connect ME Configuration and Management

Home

Configuration

- Network
- Serial Ports
- GPIO
- Alarms
- System
- Remote Management
- Users

Management

- Serial Ports
- Connections

Administration

- File Management
- Backup/Restore
- Update Firmware
- Factory Default Settings
- System Information
- Reboot

Logout

Network Configuration

▼ IP Settings

☒ Obtain an IP address automatically using DHCP *

☐ Use the following IP address:

* IP Address: 192.168.1.21

* Subnet Mask: 255.255.255.0

Default Gateway: 192.168.1.240

* Changes to DHCP, IP address and Subnet Mask require a reboot to take effect.

Apply

▶ Network Services Settings

▶ Advanced Network Settings

Copyright © 1996-2006 Digi International Inc. All rights reserved.
www.digi.com



Digi Connect ME Configuration and Management

[?](#) Help

[Home](#)

Configuration

[Network](#)

[Serial Ports](#)

[GPIO](#)

[Alarms](#)

[System](#)

[Remote Management](#)

[Users](#)

Management

[Serial Ports](#)

[Connections](#)

Administration

[File Management](#)

[Backup/Restore](#)

[Update Firmware](#)

[Factory Default Settings](#)

[System Information](#)


[Reboot](#)

[Logout](#)

Serial Port Configuration

Port	Description	Profile	Serial Configuration
Port 1	None	TCP Sockets	57600 8N1

Copyright © 1996-2006 Digi International Inc. All rights reserved.
www.digi.com



Digi Connect ME Configuration and Management

[Home](#)
Configuration
[Network](#)
[Serial Ports](#)
[GPIO](#)
[Alarms](#)
[System](#)
[Remote Management](#)
[Users](#)
Management
[Serial Ports](#)
[Connections](#)
Administration
[File Management](#)
[Backup/Restore](#)
[Update Firmware](#)
[Factory Default Settings](#)
[System Information](#)
[Reboot](#)
[Logout](#)

[Help](#)

Serial Port Configuration

Port Profile Settings

Current Port Profile: **TCP Sockets** [Change Profile...](#)
The TCP Sockets Profile allows a serial device to communicate over a TCP network.

TCP Server Settings

Connect directly to the serial device using the following TCP ports on the network.

<input checked="" type="checkbox"/> Enable Telnet access using TCP Port:	<input type="text" value="2001"/>	<input type="checkbox"/> Enable TCP Keep-Alive
<input checked="" type="checkbox"/> Enable Raw TCP access using TCP Port:	<input type="text" value="2101"/>	<input checked="" type="checkbox"/> Enable TCP Keep-Alive
<input checked="" type="checkbox"/> Enable Secure Socket access using TCP Port:	<input type="text" value="2601"/>	<input type="checkbox"/> Enable TCP Keep-Alive

TCP Client Settings

Automatically establish bi-directional TCP connections between the serial device and a server or other networked device.

☐ Automatically establish TCP connections

Establish connection under one of the following conditions:

- ☒ Always connect and maintain connection
- ☐ Connect when data is present on the serial line
Match string:
- ☐ Strip string before sending
- ☐ Connect when DCD (Data Carrier Detect) line goes high
- ☐ Connect when DSR (Data Set Ready) line goes high

Establish connection to the following network service:

IP Address:

Service:

TCP Port:

☐ Enable TCP Keep-Alive



Digi Connect ME Configuration and Management

[? Help](#)

[Home](#)

Configuration

[Network](#)

[Serial Ports](#)

[GPIO](#)

[Alarms](#)

[System](#)

[Remote Management](#)

[Users](#)

Management

[Serial Ports](#)

[Connections](#)

Administration

[File Management](#)

[Backup/Restore](#)

[Update Firmware](#)

[Factory Default Settings](#)

[System Information](#)

[Reboot](#)

[Logout](#)

GPIO Configuration

General Purpose Input/Output Pins

	Mode	Initial Output State
Pin 1:	In	Default
Pin 2:	Serial (CTS)	Default
Pin 3:	In	Default
Pin 4:	In	Default
Pin 5:	In	Default

[Apply](#)