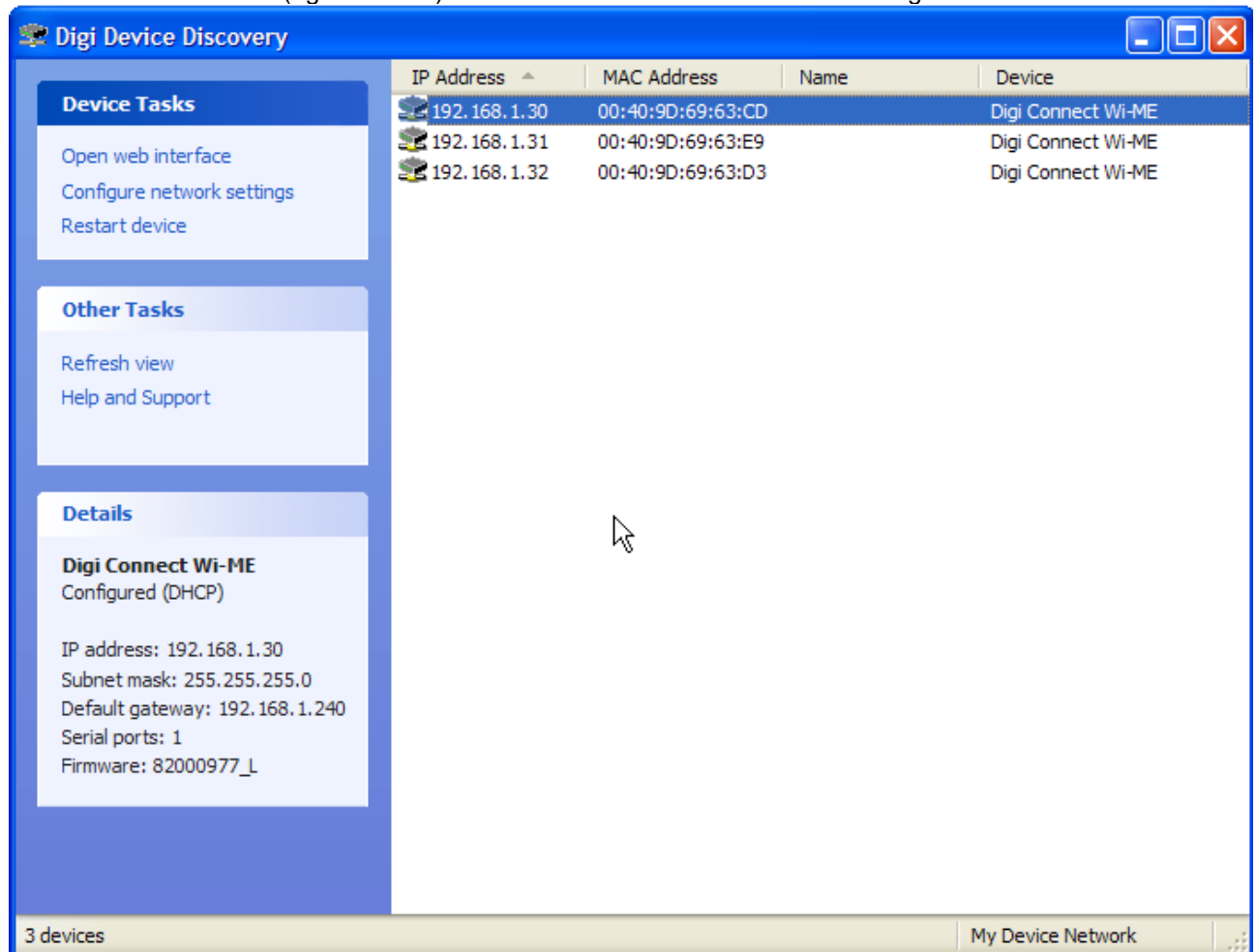


Config. and reset procedure for WiFi optional module of 80.087.7000 (EL7) electronic board – Italora code PBHK39204203000

- Setup a WiFi ACCESS POINT without any crypt protection
- Enable DHCP mode of your ACCESS POINT
- Run DIGI DISCOVERY (dgdiscvr.exe) to detect WiFi device and its DHCP assigned address



- double-click listed device to enter web setup panel
- login parameters:  
USERNAME = root  
PASSWORD = dbps

## CONFIGURATION LOADING

Click BACKUP/RESTORE and select configuration file by BROWSE  
Click RESTORE to enable selected configuration



### Digi Connect Wi-ME Configuration and Management

[? Help](#)

[Home](#)

#### Configuration

[Network](#)  
[Serial Ports](#)  
[GPIO](#)  
[Alarms](#)  
[System](#)  
[iDigi](#)  
[Users](#)

#### Applications

[Ekahau Client](#)  
[RealPort](#)

#### Management

[Serial Ports](#)  
[Connections](#)

#### Administration

[File Management](#)  
[Backup/Restore](#)  
[Update Firmware](#)  
[Factory Default Settings](#)  
[System Information](#)  
[Reboot](#)

[Logout](#)

#### Backup/Restore

Backup configuration to a file on your PC or server.

☐ Include encrypted passwords and keys in the backup file.  
Read [important security information](#) about using this option.

[Backup](#)

You will be prompted for where to save the [backup file](#).

Restore configuration from a file on your PC or server.

**Note:** If the restored configuration modifies the network settings, your Digi device server will dynamically switch to the new settings. You will need to manually redirect your browser to the new IP address.

Restore From File:

[Scegli file](#)

Nessun file selezionato

[Restore](#)

## FACTORY DEFAULT SETTING - RESET

Click Factory Default Settings, then click RESTORE



### Digi Connect Wi-ME Configuration and Management

 [Help](#)

[Home](#)

#### Configuration

[Network](#)  
[Serial Ports](#)  
[GPIO](#)  
[Alarms](#)  
[System](#)  
[iDigi](#)  
[Users](#)

#### Applications

[Ekahau Client](#)  
[RealPort](#)

#### Management

[Serial Ports](#)  
[Connections](#)

#### Administration

[File Management](#)  
[Backup/Restore](#)  
[Update Firmware](#)  
[Factory Default Settings](#)  
[System Information](#)  
[Reboot](#)

[Logout](#)

#### Factory Default Settings

**Caution:** Restoring the factory default settings will clear **all** current settings and automatically reboot the Digi Connect Wi-ME.

☒ Keep these settings: network, security and host keys/certificates

[Restore](#)

Italora default configuration is summarized by following screenshots



## Digi Connect Wi-ME Configuration and Management

[Home](#)  
**Configuration**  
[Network](#)  
[Serial Ports](#)  
[GPIO](#)  
[Alarms](#)  
[System](#)  
[iDigi](#)  
[Users](#)  
**Applications**  
[Ekahau Client](#)  
[RealPort](#)  
**Management**  
[Serial Ports](#)  
[Connections](#)  
**Administration**  
[File Management](#)  
[Backup/Restore](#)  
[Update Firmware](#)  
[Factory Default Settings](#)  
[System Information](#)  
[Reboot](#)  
[Logout](#)

[Help](#)  
**Network Configuration**  
**WiFi IP Settings**  
Configure the network below. IPv6 settings are shown here for informational purposes.  
**IPv6**  
Link Local Address: FE80::240:9DFF:FE69:63D3  
Site Local Address: none  
**IPv4**  
☒ Obtain an IP address automatically using DHCP \*  
☐ Use the following IP address:  
\* IP Address: 192.168.1.185  
\* Subnet Mask: 255.255.255.0  
Default Gateway: 192.168.1.250  
☒ Enable AutoIP address assignment  
\* Changes to DHCP, IP address, and Subnet Mask may affect your browser connection.  
  
**WiFi LAN Settings**  
**WiFi Security Settings**  
**WiFi 802.1x Authentication Settings**  
**Network Services Settings**  
**IP Forwarding Settings**  
**Socket Tunnel Settings**  
**Advanced Network Settings**



## Digi Connect Wi-ME Configuration and Management

[? Help](#)

[Home](#)

### Configuration

- [Network](#)
- [Serial Ports](#)
- [GPIO](#)
- [Alarms](#)
- [System](#)
- [Remote Management](#)
- [Users](#)

### Applications

- [Ekahau Client](#)

### Management

- [Serial Ports](#)
- [Connections](#)

### Administration

- [File Management](#)
- [Backup/Restore](#)
- [Update Firmware](#)
- [Factory Default Settings](#)
- [System Information](#)
- [Reboot](#)

[Logout](#)

## Network Configuration

- [IP Settings](#)
- [Wireless LAN Settings](#)
- [Wireless Security Settings](#)
- [Wireless 802.1x Authentication Settings](#)
- [Network Services Settings](#)
- [Advanced Network Settings](#)

The following settings are advanced settings used to fine tune the network connection and network interfaces. The default settings will typically work in most situations.

### IP Settings

Host name:

☒ Enable AutoIP address assignment

### TCP Keep-Alive Settings

Idle Timeout:  hrs  mins  secs

Probe Interval:  secs Probe Count:

### Wireless Interface

Max Transmission Rate:

[Home](#)

## Configuration

[Network](#)  
[Serial Ports](#)  
[GPIO](#)  
[Alarms](#)  
[System](#)  
[iDigi](#)  
[Users](#)

## Applications

[Ekahau Client](#)  
[RealPort](#)

## Management

[Serial Ports](#)  
[Connections](#)

## Administration

[File Management](#)  
[Backup/Restore](#)  
[Update Firmware](#)  
[Factory Default Settings](#)  
[System Information](#)  
[Reboot](#)

[Logout](#)

### Serial Port Configuration

Port	Description	Profile	Serial Configuration
Port 1	None	TCP Sockets	57600 8N1



## Digi Connect Wi-ME Configuration and Management

[Home](#)

## Configuration

[Network](#)  
[Serial Ports](#)  
[GPIO](#)  
[Alarms](#)  
[System](#)  
[Remote Management](#)  
[Users](#)

## Applications

[Ekahau Client](#)

## Management

[Serial Ports](#)  
[Connections](#)

## Administration

[File Management](#)  
[Backup/Restore](#)  
[Update Firmware](#)  
[Factory Default Settings](#)  
[System Information](#)  
[Reboot](#)

[Logout](#)

### Serial Port Configuration

#### Port Profile Settings

#### Basic Serial Settings

Description:

Baud Rate:

Data Bits:

Parity:

Stop Bits:

Flow Control:

#### Advanced Serial Settings



## Digi Connect Wi-ME Configuration and Management

[? Help](#)

[Home](#)

### Configuration

[Network](#)  
[Serial Ports](#)  
[GPIO](#)  
[Alarms](#)  
[System](#)  
[iDigi](#)  
[Users](#)

### Applications

[Ekahau Client](#)  
[RealPort](#)

### Management

[Serial Ports](#)  
[Connections](#)

### Administration

[File Management](#)  
[Backup/Restore](#)  
[Update Firmware](#)  
[Factory Default Settings](#)  
[System Information](#)  
[Reboot](#)

[Logout](#)

## Serial Port Configuration

### Port Profile Settings

Current Port Profile: **TCP Sockets** [Change Profile...](#)  
The TCP Sockets Profile allows a serial device to communicate over a TCP network.

### TCP Server Settings

Connect directly to the serial device using the following TCP ports on the network.

- |  |                                   |  |
|--|-----------------------------------|--|
| <input checked="" type="checkbox"/> Enable Telnet access using TCP Port:             | <input type="text" value="2001"/> | <input type="checkbox"/> Enable TCP Keep-Alive |
| <input checked="" type="checkbox"/> Enable Raw TCP access using TCP Port:            | <input type="text" value="2101"/> | <input type="checkbox"/> Enable TCP Keep-Alive |
| <input checked="" type="checkbox"/> Enable Secure Shell (SSH) access using TCP Port: | <input type="text" value="2501"/> | <input type="checkbox"/> Enable TCP Keep-Alive |
| <input checked="" type="checkbox"/> Enable Secure Socket access using TCP Port:      | <input type="text" value="2601"/> | <input type="checkbox"/> Enable TCP Keep-Alive |

### TCP Client Settings

Automatically establish bi-directional TCP connections between the serial device and a server or other networked device.

- ☐ Automatically establish TCP connections
- Establish connection under one of the following conditions:
- ☒ Always connect and maintain connection
  - ☐ Connect when data is present on the serial line  
Match string:   
☐ Strip string before sending
  - ☐ Connect when DCD (Data Carrier Detect) line goes high
  - ☐ Connect when DSR (Data Set Ready) line goes high

Establish connection to the following network service:

Server (name or IP):

Service:



## Digi Connect Wi-ME Configuration and Management

[? Help](#)

[Home](#)



### Configuration

[Network](#)  
[Serial Ports](#)  
[GPIO](#)  
[Alarms](#)  
[System](#)  
[iDigi](#)  
[Users](#)

### Applications

[Ekahau Client](#)  
[RealPort](#)

### Management

[Serial Ports](#)  
[Connections](#)

### Administration

[File Management](#)  
[Backup/Restore](#)  
[Update Firmware](#)  
[Factory Default Settings](#)  
[System Information](#)  
[Reboot](#)

[Logout](#)

### GPIO Configuration

General Purpose Input/Output Pins

	Mode	Initial Output State
Pin 1:	<input type="text" value="In"/>	<input type="text" value="Default"/>
Pin 2:	<input type="text" value="Serial (CTS)"/>	<input type="text" value="Default"/>
Pin 3:	<input type="text" value="In"/>	<input type="text" value="Default"/>
Pin 4:	<input type="text" value="In"/>	<input type="text" value="Default"/>
Pin 5:	<input type="text" value="In"/>	<input type="text" value="Default"/>